

Laboratory for Data Technologies



University of Ljubljana,
Faculty of Computer and Information Science

Ljubljana, 4.11.2011

Laboratory for Data Technologies (LPT)

- Part of Informatics Group, Faculty of Computer and Information Science (founded in 2008).
- Currently 12 members (head prof. Marko Bajec):

Marko Bajec,
PhD



Associate Professor, Head

Aljaž Zrnec,
PhD



Senior-Lecturer

Štefan Furlan



Junior researcher

Lovro Šubelj



Junior researcher

Aleš Kumer



Assistant-Lecturer

Bojan Klemenc



Assistant-Lecturer

Dejan Lavbič,
PhD



teaching assistant

Slavko Žitnik



Junior researcher

Neli Blagus



Junior researcher

Milan Pevec



Researcher

Jernej Korošec



Researcher

Kaja Vidmar



Researcher

- Lectures on databases, information systems etc.

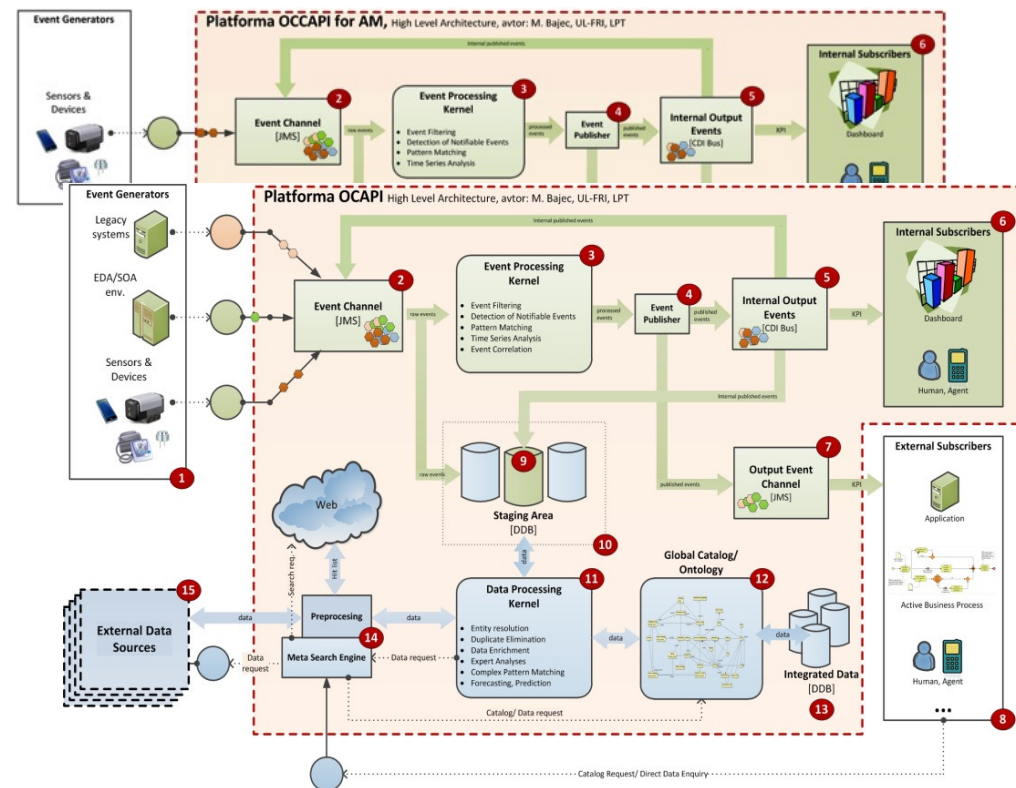
Projects



Copyright (c) 2011 FRI-LPT

On-going projects

- Two on-going projects (“Kompetencni Centri”):
 - KC-OPCOMM – intelligent application platform;
 - KC-CLASS – cloud computing.



Past projects

- Some past projects:

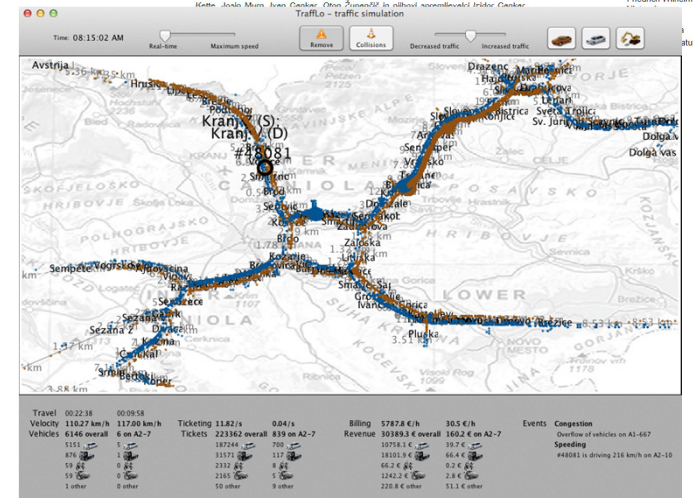
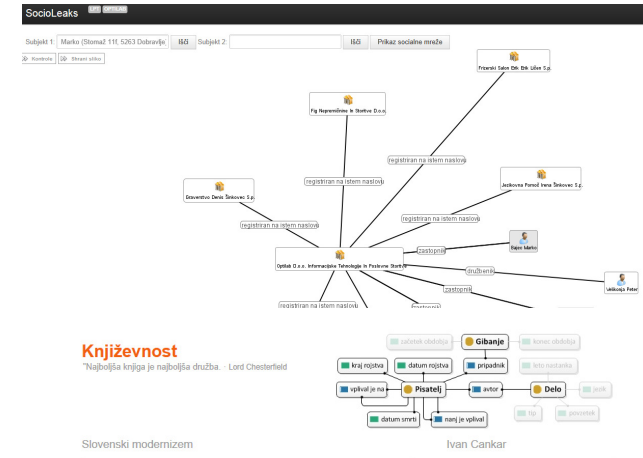
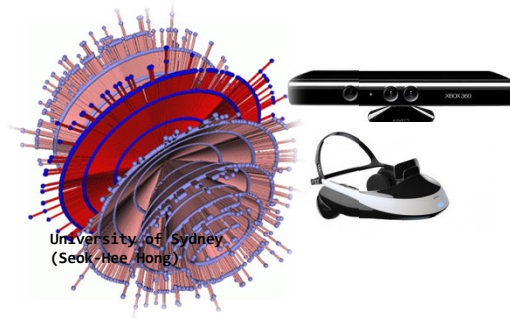
- prototype architecture for fraud detection systems;
(project VALOR, Optilab d.o.o., 2009)
- prototype billing system for electrical-energy systems;
(project for industry, Optilab d.o.o., 2009 - 2011)
- specifications for a billing system for electrical-distribution companies in Slovenia.
(project for industry, Informatika d.d., 2008 – 2009)

- Some partners:

- | | |
|---|---|
| ● LTFE;  | ● KC-TIGER; |
| ● Iskratel;  | ● KC-STV; |
| ● Špica Int.;  | ● Infotehna ;  |
| ● MP; | ● Telekom;  |
| ● DARS;  | ● Mobitel; |
| ● DRSC;  | ● NLB;  |
| ● PKP; | ● other. |

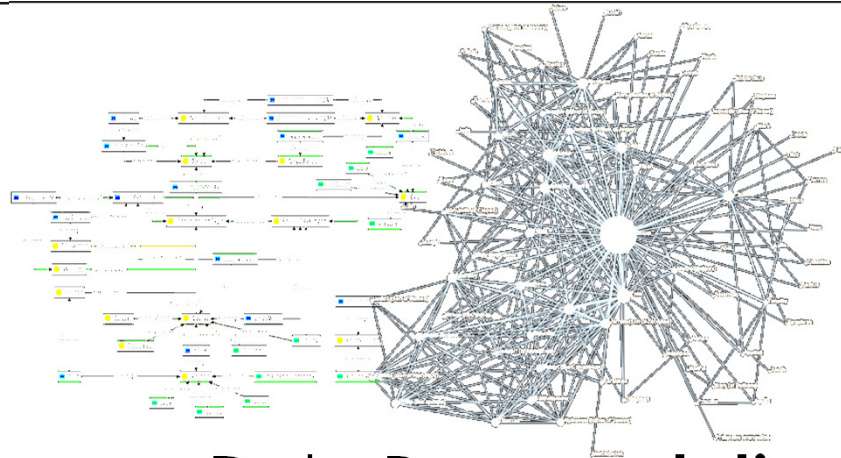
Starting projects

- Some *future* research-oriented projects:
 - Supervisor+ – “socio leaks” [sub. IJU ‘11];
 - WhoKnowsWho – social relations;
 - TellMeMore – dynamic web mining;
 - iCORE & IOBIE – inform. retrieval [IJU ‘10];
 - TrafficSim – traffic simulation & analysis;
 - VisSonCon – 3D visualization, soundification & control.



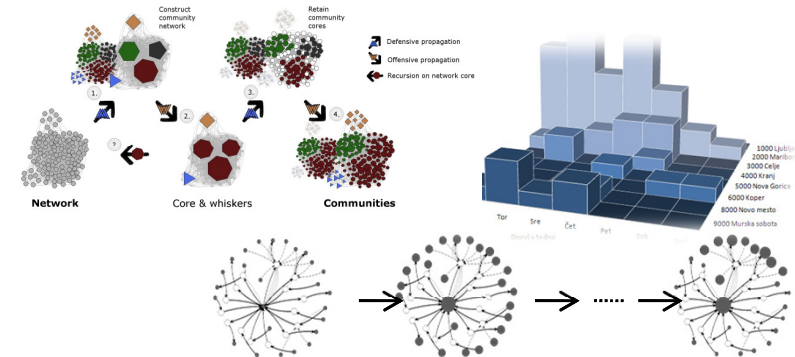
Research





Data Representation

Relations, ontologies, graphs & networks, web & text data, XML, data streams, etc.

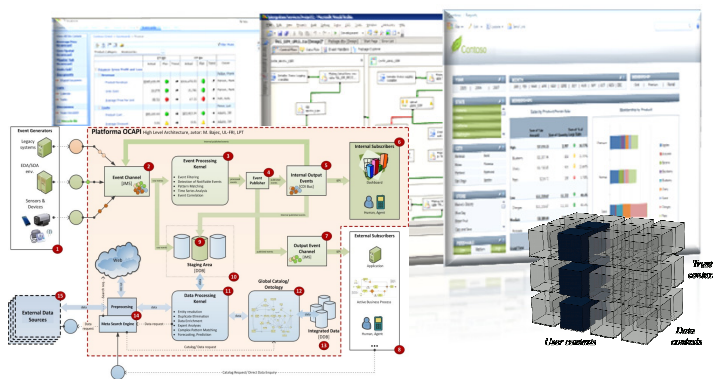


Data Analysis

Information retrieval & extraction, network analysis & mining, data mining & knowl. discovery, real-time etc.

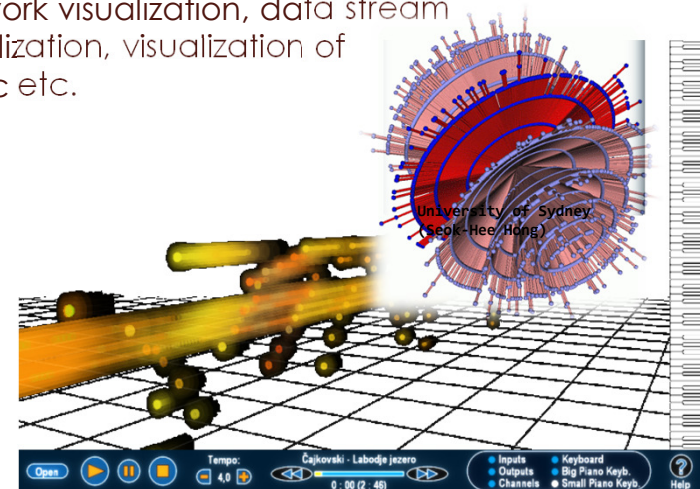
Data Management

Heterogeneous data fusion & integration, EDA, noSQL, business intelligence etc.



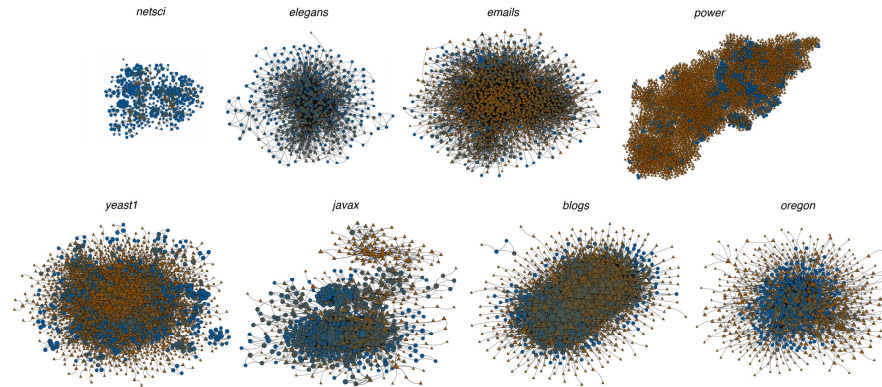
Data Visualization

Network visualization, data stream visualization, visualization of music etc.

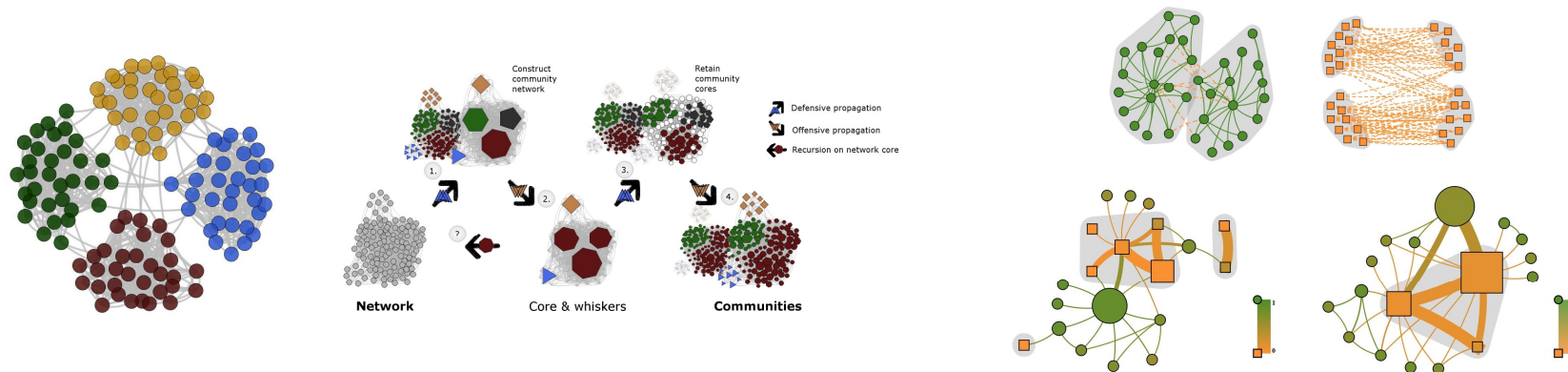


Network analysis, I

- Social, information, biological, technological, economical, etc. networks.

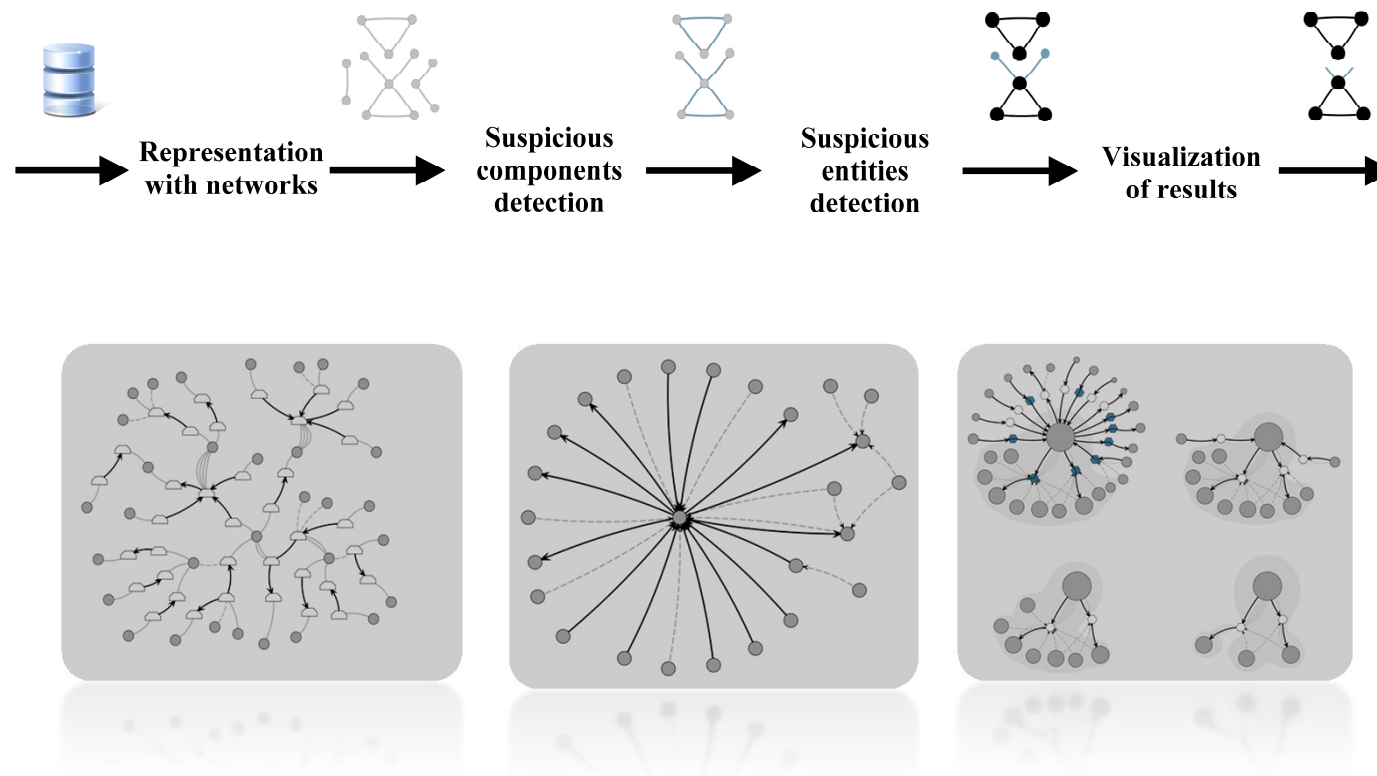


- Common properties of real-world networks [IJU '10]:
 - small-worlds; scale-freeness; community, fractal structure; etc.
- Community structure analy. [Phys. Rev. E, Eur. Phys. J. B, 2011; ACNE '10, NEMO '11]:



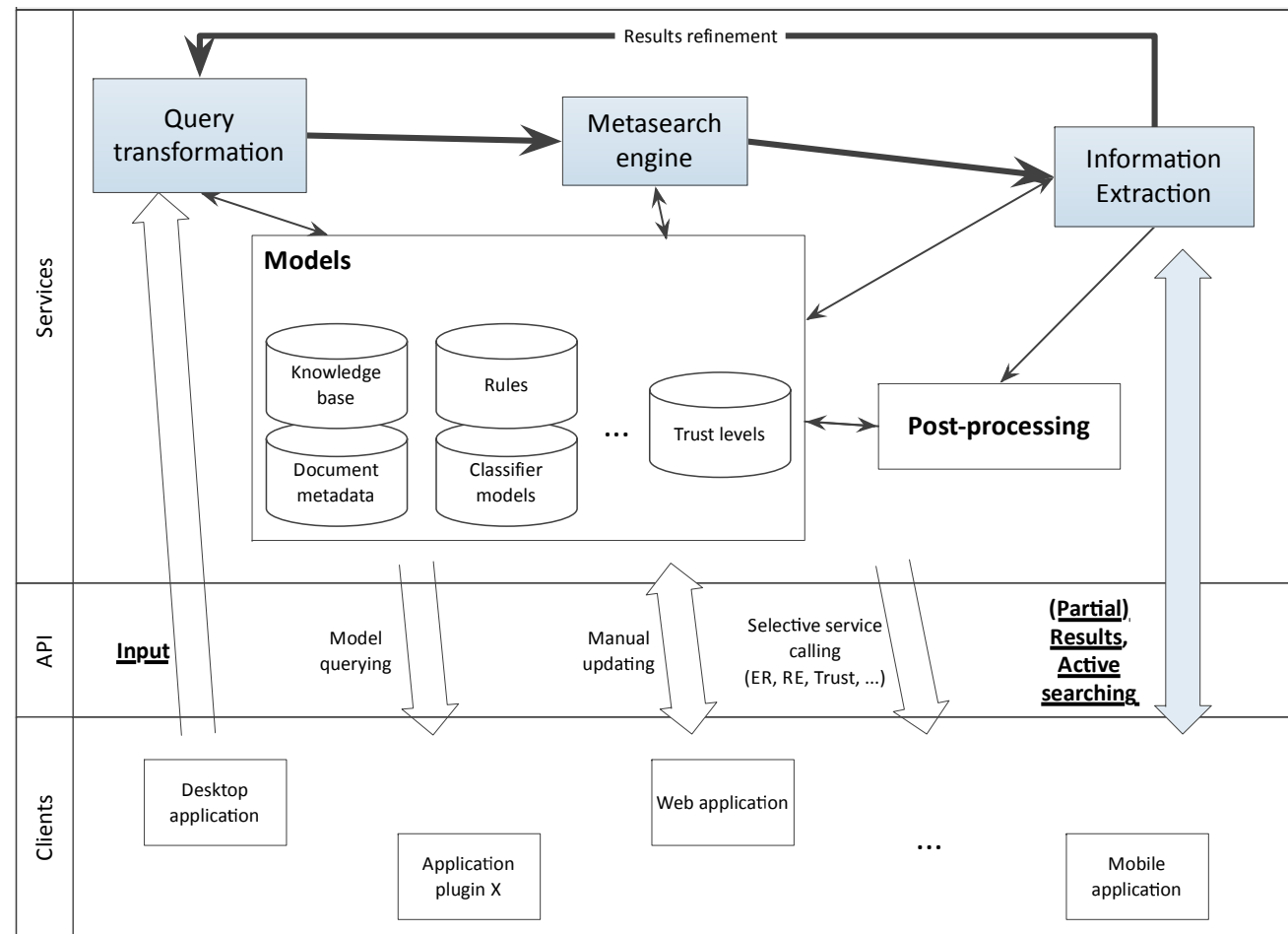
Network mining

- Expert syst. for detection of auto. ins. fraud [Expert Syst. Appl., 2011; DSI '09] :



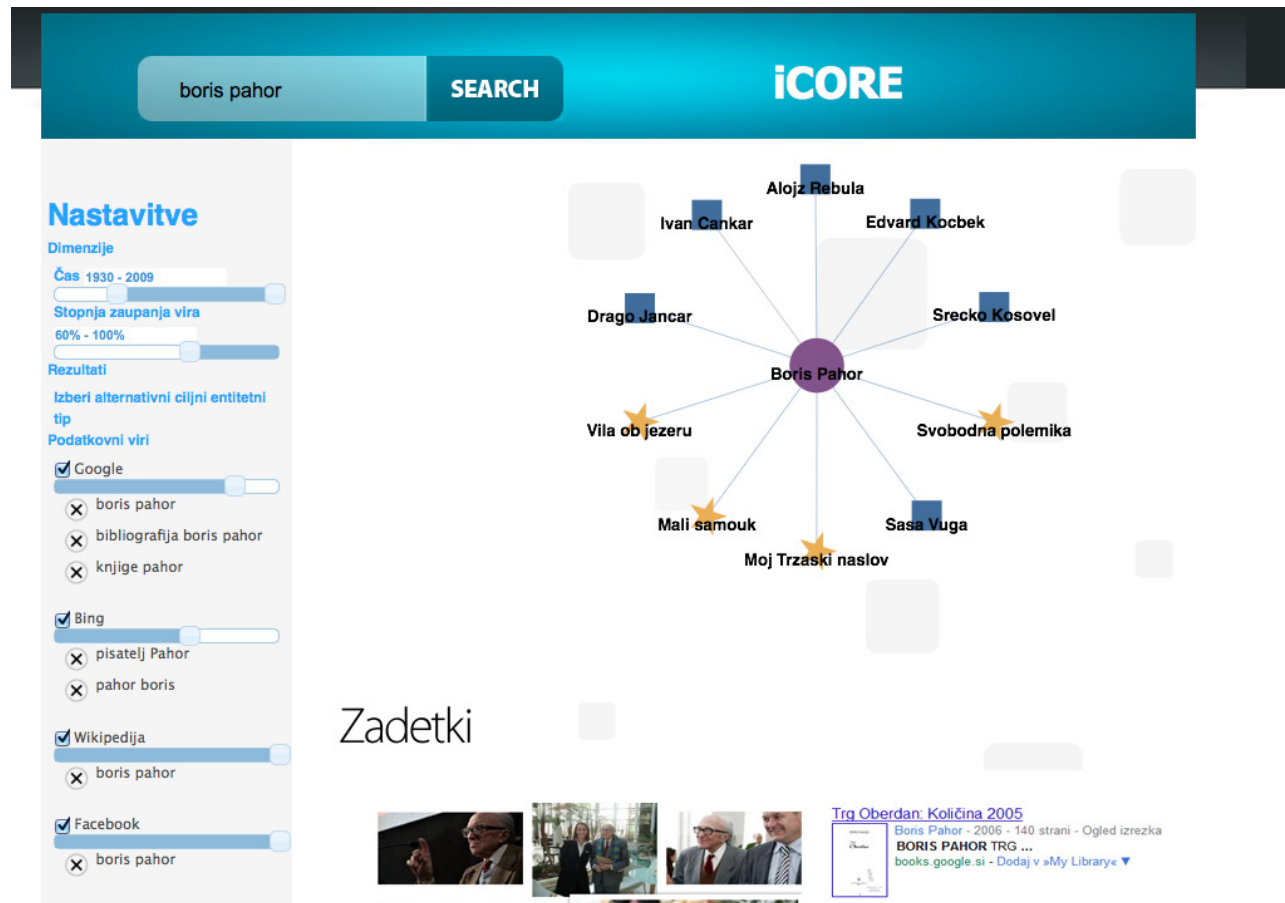
Information retrieval, I

- iCORE system [IJU '10] :



Information retrieval, II

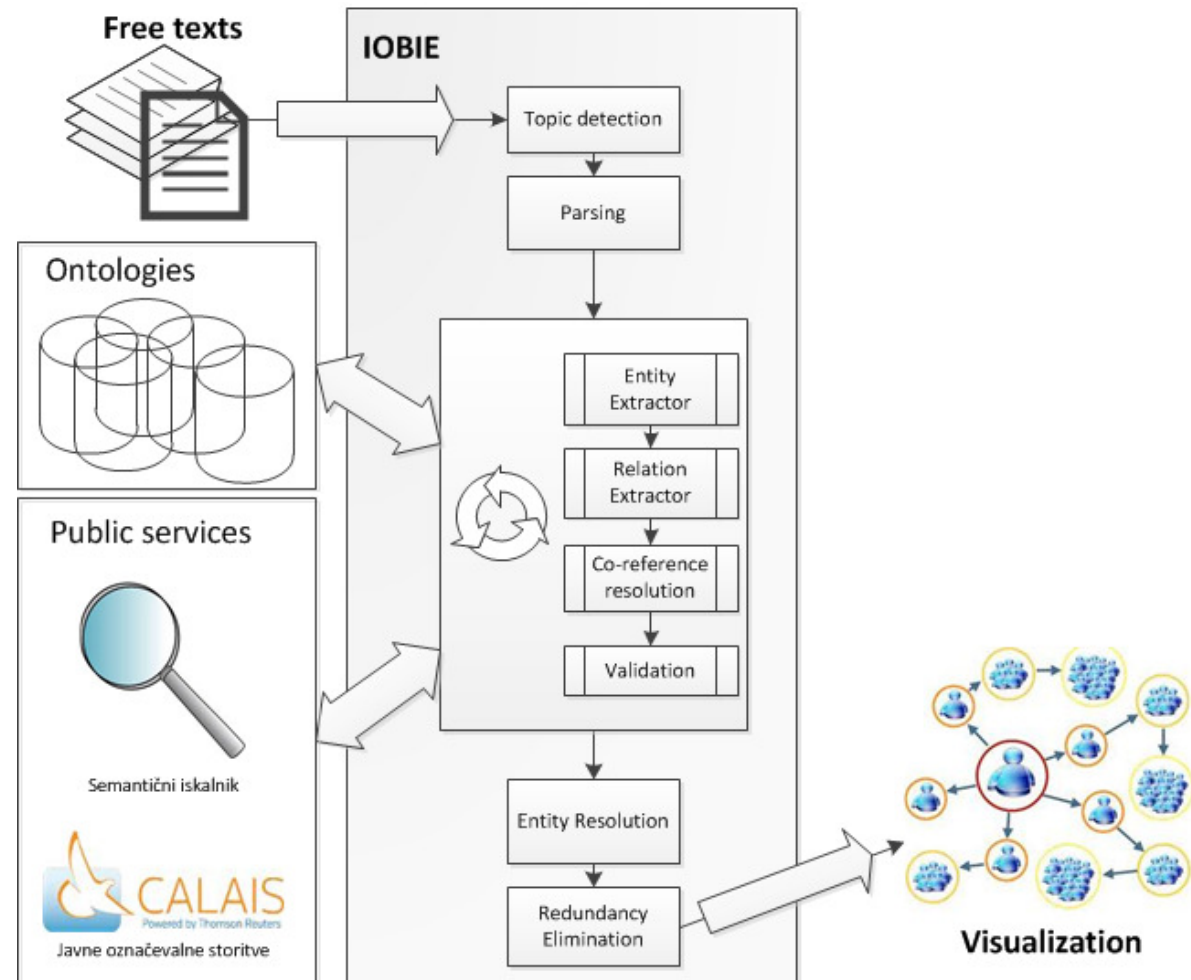
- iCORE demo:



<http://zitnik.si/temp/icorev2/>

Information extraction, I

- IOBIE system:
 - pluggable framework;
 - ontology-based;
 - ML models (*);
 - collective extraction.



Information extraction, II

- IOBIE example:

Janez Novak(PER) studied at FRI(ORG).

...

As a citizen, he likes Vino(FOOD, LOC).

Janez Novak(PER) studied at FRI(ORG).

...

As a citizen, he(PER) likes Vino(FOOD, LOC).

Janez Novak(PER) studied at FRI(ORG).

...

As a citizen, he likes Vino(FOOD, LOC).

New iteration:

Janez Novak(PER) studied at FRI(ORG).

...

As a citizen, he(PER) likes Vino(LOC).